

August 2016  
Issue #238

N

# NEW ZEALAND INSTITUTE OF SURVEYORS NEWSLINK

INFORMING THE SURVEY AND SPATIAL COMMUNITY

Te Rōpū Kairūri o Aotearoa

[www.surveyors.org.nz](http://www.surveyors.org.nz)

## WELCOME TO NEW DIAMOND PARTNER – ACCURATE INSTRUMENTS (NZ) LTD



Our latest partnership is ideal for NZIS. Accurate Instruments not only supplies a massive range of accurate instruments for a wide range of industries, but they also go to great depth ensuring clients get the results and accuracies they need to do their jobs. They do this by providing in-depth advice on the appropriate technology to use for particular projects and situations, and giving instruction and training on the correct uses of methodology.

"Accurate Instruments is an excellent fit for us as a partner," says Hadyn Smith, CEO, "I'm thrilled to have them aboard given the nature of our business-they can only add value by providing the best instrument accuracy services possible to NZIS members."

The company is 100% New Zealand owned and is the Master Distributor in NZ for a number of International Instrument manufacturers. Elle Archer, Director of Accurate Instruments explains the company's ethos:

"We are proud to partner with NZIS in this capacity and look forward to a mutually beneficial relationship with the Institute. In today's world it is becoming more and more apparent that the supply and support of site technology must have a holistic approach. Our ethos is to aide industry as best we can; by providing the right advice, technological solutions, instrument support, and industry training and education. We will endeavour to continue to serve our industries in Integrated Technology Solutions in New Zealand and the Pacific Islands."

"Our company offers some of the world's top quality trade instruments available, yet our pricing is highly competitive and represents value for money. We are instrument advisors, and endeavour to find the right solution for our client by careful analysis of the application and intended result."

"We pride ourselves on our professionalism, ethical industry responsibility, building and maintaining relationships, specialist advice and service, quality of product, and of course our people. It is just as important to us to maintain great relationships with our suppliers as well as our clientele, and we pride ourselves on these successful networks."

The company has eight sales department and five support and supply departments. Visit the website to get an idea of the depth and range of services now available to members.

Contact Accurate Instruments: [www.accurate.kiwi](http://www.accurate.kiwi), [www.safety.kiwi](http://www.safety.kiwi)

### INSIDE

- [1. Welcome to New Diamond Partner](#)
- [2. Future Events](#)
- [3. Professional Entrance Exams 2016](#)
- [4. LINZ News](#)
- [5. GEOCART'2016](#)
- [6. NZIS Advocacy and Legislative Update](#)
- [7. Website of Interest](#)
- [8. Professional Streams and Branches](#)
- [10. Situations Vacant](#)
- [12. Advertising Rates](#)

## BIM in Auckland Meet Up



An event for BIM Managers, Architects, Engineers, Contractors, Facility Managers, Manufacturers, Project Managers or anyone else wanting to learn and share information about BIM is being held in Auckland on 25 August.

### Details are:

BIM AK August Event, Thursday 25 August 2015, 5.30pm - 8.00pm

Venue: GHD, Level 3, GHD Centre, 27 Napier Street, Freemans Bay, Auckland.

Attendance is FREE, drinks and food will be provided but pre-event registration is essential. All attendees are required to register prior to the day of the event via the registration link below. BIM AK events plans to have something for everyone.

Book here:

<https://www.eventbrite.co.nz/e/bim-ak-august-2016-event-tickets-26711937123>

LinkedIn:

<https://www.linkedin.com/groups/8424531>

## Important Dates

### NZ Spatial Excellence Awards 2016



Entries for the Awards are open until 26 August and the date for the awards announcement dinner has been set for Wednesday 16 November at Te Papa Tongarewa, Wellington. Watch the website for updated information  
<http://nzspatialawards.org.nz/>

### NZIS 128th Annual General Meeting

The AGM is being held in Wellington 20 October, 4:45pm at the Wellington Club, Level 4, 88 The Terrace.

Is it time to take a  
**closer look** at your  
Professional Indemnity Cover?



Land surveying is a business that demands precision and unbending professional standards. We take the same approach to insurance.

Our PI Cover has been specially created for New Zealand-based land surveyors and is underwritten by Lloyds of London. It comes with features that represent a significant advance on what's been offered up until now:

- Cadastral Survey Act cover
- Legal liability cover with limits starting at \$1,000,000
- Lower excesses in almost all cases
- Premium advised before policy expiry date
- Professional claim support by Glenn Stone Insurance

Full Theft Business Asset Cover and cover for all your other insurance risks is also available.

Put us to the test. Contact Glenn Stone Insurance now and find out how you can have cover that's as professional as you are.

Freephone:

**0800 555 474**

[info@glennstone.co.nz](mailto:info@glennstone.co.nz)

[www.glennstone.co.nz](http://www.glennstone.co.nz)



**GLENN STONE  
INSURANCE**

Glenn Stone Insurance Ltd  
PO Box 15854, New Lynn  
Waitakere 0640

## PROFESSIONAL ENTRANCE EXAMS 2016 – KEY DATES

Bookings are open for the November Professional Entrance Exams.

### Key dates are:

19 August 2016-Closing date for any exemptions for November 2016 Professional Entrance Examinations.

30 September 2016-Closing date for applications to sit November 2016 Professional Entrance Examinations.

7 October 2016-Timetables sent to eligible candidates for November 2016 Professional Entrance Examinations.

14 November 2016-Start of November Professional Entrance Examinations

Book your place here:

[http://www.surveyors.org.nz/Event?Action=View&Event\\_id=273](http://www.surveyors.org.nz/Event?Action=View&Event_id=273)

## CONTINUING PROFESSIONAL DEVELOPMENT – WHAT’S COMING UP

### Shake, Rattle and Roll – Dealing with the new national earthquake standards

This topical series starts in Wellington, 1 August and is presented by top GNS scientist Matt Gerstenberger, MBIE expert John Gardiner, and Opus National Technical Director, Paul Campbell. Topics covered include:

- What the hazards and risks are and how infrastructure projects are affected
- What makes a building resilient, the scope of buildings covered by the system, how to access the Earthquake-prone Buildings
- Register, potential solutions for strengthening earthquake prone buildings, measures to encourage earlier upgrades through a new requirement to strengthen earthquake-prone buildings when substantial alterations are undertaken
- How your region fits into the National Seismic Hazard Model (NSHM) and timeframes for identifying and strengthening earthquake-prone buildings according to the seismic risk around New Zealand
- How to work with an earthquake engineer and what information should a property professional/owner have available.

Book in National Calendar:

[http://www.surveyors.org.nz/Calendar?Action=View&Calendar\\_id=1](http://www.surveyors.org.nz/Calendar?Action=View&Calendar_id=1)

### NZIS AGM DATE CHANGE

NOW THURSDAY 20TH OCTOBER 2016 IN WELLINGTON

## SOCIAL MEDIA!

Remember to head over to our **Linkedin** and **Facebook** pages to keep in touch with regular NZIS news:

<https://www.facebook.com/nzsurveyors/>

<https://www.linkedin.com/company/new-zealand-institute-of-surveyors>

We look forward to seeing you over there!

Please contact

[laurenmcgee@surveyors.org.nz](mailto:laurenmcgee@surveyors.org.nz)

if you have a story or photo you would like to share with us online or if you need help connecting to our networks.

## NZIS COPY DEADLINES



### NEWSLINK:

20th of each preceding month  
**SURVEYING+SPATIAL:**  
For the December 2016 Issue is  
**1st November 2016**

## SUMMARIES OF CASES FROM THOMSON REUTERS' "YOUR ENVIRONMENT" AND "ALERT24 – LAND"

This month we report on six court decisions covering diverse situations associated with subdivision, development and land use activities from around the country:

- An unsuccessful application for judicial review of refusal by Queenstown Lakes District Council to recommend approval of a property near Arrowtown as a Special Housing Area;
- A case involving long-standing arguments about designation of a major roading route through land in Albany on Auckland's north shore which had impeded provision of infrastructure to support urban development of the area;
- An unsuccessful attempt by a company acting for a telecommunications company to circumvent the process of land subdivision required by the RMA;
- A decision striking out a vexatious appeal against approval of a private plan change in Upper Hutt to rezone the site of the former animal research centre at Wallaceville for urban uses;
- A successful appeal on a majority decision against refusal of consent to a non-complying subdivision of a property at Lowburn, Central Otago;
- A successful prosecution of a house-moving company for felling protected Pohutukawa trees growing on legal road at Auckland.

Login and download the pdf of the summaries at:

[http://www.surveyors.org.nz/Category?Action=View&Category\\_id=39](http://www.surveyors.org.nz/Category?Action=View&Category_id=39)

Previous Notes are currently unavailable whilst our new website is being built.

  
**SURPEG™ PLASTIC SURVEY PEG**  
**\*Surpeg complies with the Surveyor General's Rules for Cadastral Survey 2010\***  
Professional, Efficient and Convenient Boundary Marking  
Order product or sample online at [www.surpeg.com](http://www.surpeg.com)  
Product inquiries – ph: 021 369 804 or [info@wellfound.co.nz](mailto:info@wellfound.co.nz)

### LINZ NEWS

#### Advanced Survey and Titles Services (ASaTS)



Key documents relating to the ASaTS project are now publicly available. These include a Cabinet paper, Detailed Business Case as well as an Addendum to the Business Case. All of which were provided to Cabinet in 2016.

View the documents here:

<http://www.linz.govt.nz/news/2016-07/asats-documents-now-available>

#### Landonline Maintenance Release 3.14

This release is scheduled to go live on Monday, 22 August 2016, subject to the successful completion of testing. This is likely to mean Landonline will be unavailable on Saturday, 20 August, 2016.

See Landwrap Issue 129 of 5 July 2016 (<http://www.linz.govt.nz/news/2016-07/landwrap-july-2016>) for a brief summary of changes to both Survey and Titles users. Release notes will go out to users prior to the release.



## GEOCART'2016 NATIONAL CARTOGRAPHIC CONFERENCE- UNFOLDING THE MAP

The 8th National Cartographic Conference, GeoCart'2016, and the 4th ICA Regional Symposium on Cartography for Australasia and Oceania, will convene from 31 August - 2 September 2016. This is being held at the National Library in Wellington.

Attendees will have the opportunity to view the National Library's Unfolding the Map exhibition at the same venue as the conference.

Early-bird registrations close on  
**Friday 12th August 2016.**

See website for more information, the conference programme and registrations:  
<http://geocart.cartography.org.nz/2016/>

## REVIEW OF RULES FOR CADASTRAL SURVEY 2010

The Cadastral Stream is in close discussion with LINZ regarding the review of the Rules for Cadastral Survey 2010. LINZ has indicated that this review will be a priority once they have completed the development of the Rules and guidance to support the Canterbury Property Boundaries and Related Matters Bill.

LINZ is committed to continued engagement with surveyors and bodies representing cadastral surveyors on the Rules. LINZ will be setting up an expert group for the review process and will work with us to identify members. We will keep members up to date as work on the review progresses.



AllTerra (formerly known as GeoSystems) has been Trimble's Geospatial dealer for over twenty years. We have a fantastic opening for a sales and account manager based out of our new office in the Auckland CBD. This is an excellent opportunity to represent the industry's leading technology supplier with an established client base, and work with a great team and customers!

For more information, please contact:

[https://www.seek.co.nz/job/31572839?pos=1&type=standout&engineConfig=&userqueryid=60358998704738513&tier=no\\_tier&whereid=](https://www.seek.co.nz/job/31572839?pos=1&type=standout&engineConfig=&userqueryid=60358998704738513&tier=no_tier&whereid=)

## ARCHIBALD HUGH BOGLE CBE, FNZIS. (1883 -1972) SURVEYOR EXTRAORDINAIRE

This is the story of the life and times of Archie Bogle, possibly the most outstanding surveyor in New Zealand's history. The range and depth of his talents was astonishing, and the length and variety of his service to the New Zealand Institute of Surveyors and the community unparalleled. While many tributes were paid to him in his lifetime, now, after more than 40 years, with a new generation of surveyors, it is time to revive and perpetuate his memory. The inclusion of a sample of his writings clearly demonstrates the substance of this legendary man and giant among our profession.

See the full story written by one of our members, Don Mckay on our website:  
[http://www.surveyors.org.nz/Category?Action=View&Category\\_id=41](http://www.surveyors.org.nz/Category?Action=View&Category_id=41)



## NZIS ADVOCACY AND LEGISLATIVE UPDATE

### Advanced Survey and Titles Services (ASaTS) Cadastral Survey Working Group

A working group has been formed to work with LINZ as the ASaTS project develops. The following members are part of the group: Guy Panckhurst, Matt Ryder, Karl Wilton, Jeff Needham, Don Turner, Bernie Milne, Michelle Fletcher and Michael Tagg.

### Legislation Update

An update on the following legislation is available on the website:

Link: [http://12246-console.memberconnex.com/Attachment?Action=Download&Attachment\\_id=2370](http://12246-console.memberconnex.com/Attachment?Action=Download&Attachment_id=2370)

- Incorporated Societies Bill – Exposure Draft
- Greater Christchurch Regeneration Bill (now Act)
- Canterbury Property Boundaries and Related Matters Bill
- Te Ture Whenua Māori Bill
- Resource Legislation Amendment Bill
- Land Transfer Bill.

If you have something to contribute or have questions around any of these processes, please get in touch with our Relationship Manager, Lauren: [laurenmcgee@surveyors.org.nz](mailto:laurenmcgee@surveyors.org.nz)

### NZIS Searching for Māori, Pasifika and Other Indigenous Leaders

Do you identify as Māori or Pasifika? Do you have indigenous heritage or cultural roots? Do you have a friend or colleague in the industry who does? We are wanting to speak with you!

NZIS is looking to investigate what sort of advocacy items are important to our Māori, Pasifika and indigenous membership. Alongside that we are hoping to come up with new ways in which we can support sparking the interest of Māori and Pasifika youth and what other ways we might help them through their surveying and/or spatial studies and careers. Also on the agenda for 2016 will be the implementation of a range of policies and strategies to assist in supporting Māori and Pasifika in our organisation and to fundamentally make NZIS a more diverse, culturally intelligent and inclusive organisation. Importantly – we cannot drive NZIS towards this with a solely top-down, National Office approach (who are mostly Pakeha too!). Get in touch with Lauren on [laurenmcgee@surveyors.org.nz](mailto:laurenmcgee@surveyors.org.nz) if this sounds like something you might be interested in.

### CPD FUTURE IN TECH CHANGES

NZIS has been working on a number of changes and exciting projects in the office that are targeted at promoting the surveying and spatial industries in schools and as a career choice. One thing we are excited to announce is that as of July 2016 we will now be awarding CPD points to any individual who assists in a Future in Tech placement or in any volunteer capacity that looks at introducing young people to surveying and spatial. We believe it is important to recognise the work that is undertaken by members in these kinds of capacities.

Please get in touch with Future in Tech if you are interested in volunteering to assist with schools: <http://www.futureintech.org.nz/>

Make sure you contact NZIS when you carry out volunteer work. We are always on the lookout for profiling stories of things that our members are up to and this is an area we would be particularly keen on spotlighting!



**Step 1**

**Test your business' capabilities by taking our **free** online test:**  
visit: [THEmarketingcompany.co.nz](http://THEmarketingcompany.co.nz)  
or scan a QR code below



Marketing Quiz



Sales Quiz





Business Quiz

**Step 2**

Once you've taken the test book in for your **free** Sales & Marketing Diagnostic\* worth **\$100**. Exclusively for NZIS members!  
Call us on 0800 427 627

For **free** business tips and insights follow us on:

 Search: THE Marketing Company NZ  Search: THE Marketing Company  #TMC\_NZ

## WEBSITE OF INTEREST

### Interested in Mars?

Found recently on the NASA website-they're looking for surveyors!

See: <http://mars.nasa.gov/multimedia/resources/mars-posters-explorers-wanted/>



Have you ever asked the question,  
what is out there? So have we!  
That curiosity leads us to  
explore new places like Mars and  
its moons,  
Phobos and Deimos.  
Just what lies beyond the next  
valley, canyon, crater, or hill is  
something we want to discover  
with rovers and with humans one  
day too.



### LICENCED CADASTRAL SURVEYOR OR EXPERIENCED GRADUATE SURVEYOR

- Botany Junction, Auckland
- Mt Maunganui

Positions are available in both our Auckland and Mt Maunganui offices, which involve all aspects of field surveying and office management of projects, including the preparation of resource and land use consents. These roles would suit ambitious surveyors who thrive on challenges and responsibility.

Our preferred candidates will have the following attributes:-

- Be a Licenced Cadastral Surveyor or Experienced Graduate Surveyor
- Be a member of or be eligible for membership of the NZIS
- Use/be familiar with 12D Software and Landonline
- Be willing to learn engineering design for land development and subdivision
- Demonstrate good communication and inter-personal skills

In return, we offer a competitive salary, payment of NZIS Membership fees, support for attending the NZIS conference and local seminars/workshops and an opportunity to help grow a varied and professionally challenging work load.

To apply, please email your CV to: [auckland@rpc.co.nz](mailto:auckland@rpc.co.nz) or [mountmaunganui@rpc.co.nz](mailto:mountmaunganui@rpc.co.nz).  
You can also view our website at: [www.rpc.co.nz](http://www.rpc.co.nz).

All applications and enquiries will be treated in the strictest confidence.

## Survey Business Leader

Our company is a small but thriving operation that is growing quickly in the subdivision and land development engineering services sector. Our business is led by well established, mature and experienced individuals who are looking for talented team members to join the group as we expand and take on exciting new projects.

We already operate New Zealand wide in disciplines such as Transport and Advisory Services but our land development focus is strictly in the Bay of Plenty.

The opportunity exists for a Survey Business Leader to join immediately and lead the development of new business. Our ideal model will see the Survey Business Leader deliver work locally and then possibly expand outside of the Bay of Plenty as team capability and the portfolio expands into other disciplines including Civil Engineering and Transport.

Your role would principally involve:

- undertaking and overseeing our cadastral work
- planning and delivering field work and investigations
- fostering relationships with our existing and new clients
- developing client and business strategies
- delivering the highest level of competence and experience with a strong background in land development, engineering design and construction management
- delivery of RMA, consenting and planning work

Any applicant would be expected to be a Licensed Cadastral Surveyor with approximately 10 or more years of practical surveying experience, have good IT skills and must have an up to date working knowledge of modern survey equipment, software, Landonline and the Survey rules.

Your responsibilities would include:

- engaging with our business leaders and Directors to develop strategies and align target projects and clients
- working as a member of the survey team to ensure efficient and organised project delivery
- leadership of projects as required
- Business planning
- ownership and structure of quality procedures, checking and verification of survey activity

This is a unique opportunity to take up a senior role amongst a modern team of professionals who have already developed an exciting place to work. The successful candidate will be given the opportunity to contribute and assist in the strategy and development of the business and may lead to share options and business ownership opportunities.

Apply by sending your CV and references to [info@vitruvius.co.nz](mailto:info@vitruvius.co.nz)

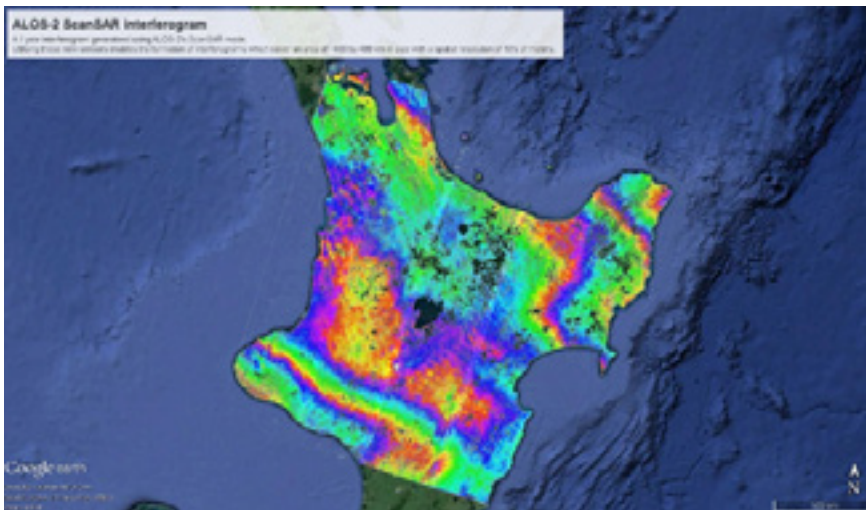


Unit 1a, 10 Hynds Road,  
Greerton, Tauranga 3112  
T +64 (07) 218 1220  
E [info@vitruvius.co.nz](mailto:info@vitruvius.co.nz)  
W [www.vitruvius.co.nz](http://www.vitruvius.co.nz)

## FOCUS ON INSAR



“InSAR. How can you monitor broad-area land deformation with high precision? Why, from space, of course!” This statement, the title from the feature article of the July issue of XYHT magazine (<http://www.xyht.com/aerialuas/insar/>) may come as a surprise, but at optimum performance it is possible to monitor ground deformation in the order of millimetres of change by InSAR methods. InSAR (Interferometric Synthetic Aperture Radar) is a satellite-based ranging technology which is perhaps outside the experience of most New Zealand surveyors, but the technology has been in use for deformation monitoring for many years. Synthetic Aperture Radar (SAR) was first used in the 1978 NASA SEASAT remote sensing mission. InSAR results for deformation measurement were first published in “Nature” in July 1993 for the June 1992 Landers (California) earthquake. Although the technology has evolved somewhat since then, it remains a tool utilised primarily by the geo-sciences research community. InSAR has become a widely used tool internationally for measuring deformation of the Earth’s surface, but expensive data costs, limited numbers of radar acquisitions, challenging surface conditions and a lack of local training has limited its usage across New Zealand. In fact currently there would appear to be only a single InSAR scientist actively utilising InSAR for deformation monitoring in New Zealand – GNS Science’s InSAR Scientist Ian Hamling.



*LEFT: This month’s image has been provided by Ian Hamling. It shows a recent interferogram over the North Island made by ALOS-2. This interferogram uses the ScanSAR mode on ALOS-2 which enables the formation of interferograms approximately 400 km x 400 km*

LINZ has a weblink to a set of presentation slides prepared by Ian Hamling and GNS colleagues, which describes the fundamentals of how InSAR works, how it can be used for deformation monitoring, and recent examples of its use in New Zealand. More at: [http://www.linz.govt.nz/system/files\\_force/media/file-attachments/Hamling\\_InSAR\\_Obs\\_NZ\\_Deformation.pdf](http://www.linz.govt.nz/system/files_force/media/file-attachments/Hamling_InSAR_Obs_NZ_Deformation.pdf).

Further general information about InSAR and its utilisation for deformation monitoring can be found at the following US Geological Survey’s resources: <https://volcanoes.usgs.gov/vhp/insar.html>; <http://pubs.usgs.gov/fs/2005/3025/2005-3025.pdf>.

Ian reports that: “Successful interferograms were produced following the 2009 Dusky Sound and 2010-2011 Christchurch earthquakes using the Japanese Space Agencies ALOS satellite, but analysis of smaller scale deformation is still in its infancy. In the last few years, work at GNS Science has started to utilise the existing archive of data acquired by the European (ESA) and Japanese (JAXA) Space Agencies, to search for evidence of surface motion across New Zealand at unprecedented spatial scales. With the launch of Sentinel 1a and 1b by ESA (in 2014 and 2016 respectively), ALOS-2 by JAXA, and the addition of the Taupo Volcanic Zone as a global supersite, radar acquisitions over New Zealand are now being made approximately every 10 days. “Supersites” are an initiative of the geo-hazard community to provide access to space-borne and in-situ geophysical data of selected sites prone to earthquake, volcano or other hazards (<http://supersites.earthobservations.org/>). With the Taupo Volcanic Zone added as a supersite, we now have access to data provided from all major satellite agencies free of charge for monitoring of volcanic hazards. Although not without challenges, this level of data coverage will start to provide new opportunities for measuring deformation of the Earth’s surface (whether from anthropogenic activities, tectonics, or volcanism) at millimetric precision.”



For more detailed information, full scientific papers on the research described above on the Dusky Sound and Christchurch earthquake events, and the Taupo Volcanic Zone can be freely accessed on-line:

- Off-axis magmatism along a subaerial back-arc rift: Observations from the Taupo Volcanic Zone, New Zealand (Hamling et al, 2016)  
<http://advances.sciencemag.org/content/2/6/e1600288.full>;
- The Mw 6.2 Christchurch earthquake of February 2011: preliminary report (Kaiser et al, 2012)  
<http://www.tandfonline.com/doi/full/10.1080/00288306.2011.641182>;
- Ground deformation in the Taupo Volcanic Zone, New Zealand, observed by ALOS PALSAR interferometry (Samsonov et al, 2011)  
<http://gji.oxfordjournals.org/content/187/1/147.full>;
- Oblique slip on the Puysegur subduction interface in the 2009 July MW 7.8 Dusky Sound earthquake from GPS and InSAR observations: implications for the tectonics of southwestern New Zealand (Beavan et al, 2008)  
<http://onlinelibrary.wiley.com/enhanced/doi/10.1111/j.1365-246X.2010.04798.x>.

Ian has also contributed the InSAR processing which eventually ends up in the NZGD2000 deformation model. LINZ's Technical Manager Geodesy, Nic Donnelly, describes the importance of InSAR data to LINZ: "LINZ doesn't process InSAR data itself at the moment, although we are working to build this capability. But the interferograms produced by GNS are a critical data source for the earthquake sub-models within the NZGD2000 deformation model. The deformation model directly impacts geodetic coordinates and therefore all geospatial data that is connected to geodetic control marks."

A huge advantage of deformation monitoring by InSAR methods over monitoring by surveying methods is that InSAR enables very efficient analysis of deformation over large geographic areas. In comparison large-area monitoring by surveying methods would require considerable resources, time and expense. However deformation monitoring by InSAR and surveying methods can be considered complementary rather than competing technologies, with each method having its own unique set of advantages and limitations, but which when combined provide a more comprehensive data set than is feasible by either method in isolation.

**To submit material for inclusion in future Positioning & Measurement stream Newslink columns please contact us via the stream LinkedIn group (<http://tinyurl.com/njbpejn>), or post material directly there.**

# GROW YOUR PEOPLE.



Eighty4 Recruitment is proud to become the first and only Recruitment Partner to the NZIS. We offer recruitment and HR consultancy services to improve your business through its people - ultimately increasing your bottom line.

**Exclusive offer to NZIS members - FREE one hour consultation on any HR & recruitment needs.**

**RECRUITMENT SERVICES**  
Access local and global candidates ready to move, returning Kiwis or market map the competition.

**HR CONSULTANCY**  
Full HR analysis and review. Building successful teams, recruitment strategies and best practice.

**JOBS**  
Multiple opportunities NZ wide to progress your career. Contact us for a confidential chat and FREE salary check.

**CONTACT:** Mark Fisher  
09 391 8484 or 021 347 445  
**Or email**  
[mark@eighty4recruitment.com](mailto:mark@eighty4recruitment.com)  
**100% NZ owned and operated**

**Eighty4**  
— RECRUITMENT —

[www.eighty4recruitment.com](http://www.eighty4recruitment.com)



Planning | Surveying | Engineering | Environmental

## Licensed Cadastral Surveyor

- Highly reputable firm with growth in its sights
- Opportunity to be part of an inspired Waikato Team
- Position available in either Te Awamutu or Hamilton office

We invite you to come and be part of our team based in the middle of the Waikato farming heartland. CKL is a well-established surveying, engineering and planning consultancy serving major land development clients, local and central government agents and private sub-dividers across the upper North Island. With leading industry technology, proven quality systems and a positive and friendly environment, we offer a refreshing approach to successful development solutions. Now is a great time to be part of a passionate and hardworking team that knows what it means to perform in their field!

Both locations mean you are never far from "Everywhere". Surfing, skiing, cycling, tramping & beaches are all easily accessible. Te Awamutu, just 25 minutes south of Hamilton offers all the facilities of a city (great schools; sports, swimming & cycling clubs; gyms; heated pool; cinema, restaurants and cafes), yet TA has affordable housing and the heart and feel of rural NZ.

CKL are looking for a newly Licensed Cadastral Surveyor who is keen to build a career on a wide range of work experience. The role will entail all aspects of Land Title and Spatial Surveying, including engineering design. You will be responsible for your own projects and will assist with overseeing technical staff. Do you have?

- 0-5 years' experience since licensing
- Experience with 12D and Landonline
- Excellent communication skills, written and verbal
- A great attitude, presentation and work ethic
- A desire to be part of a team who are inspired to make a difference in all aspects of their work

In return CKL is offering a competitive remuneration package; the opportunity to live in a family friendly rural town or city; work in modern and progressive offices with a supportive team; and the ability to be involved in a diverse range of projects. In addition, there are opportunities for career progression within CKL, supported by our Talent Management program. Applications close Wednesday August 31<sup>st</sup>

Please send a brief cover letter and your CV to:

Kay Carter,  
CKL Operations Manager  
[careers@ckl.co.nz](mailto:careers@ckl.co.nz)



Te Awamutu Office | 103 Market St | PO Box 126, Te Awamutu 3840 | Tel (07) 871 6144 | [teawamutu@ckl.co.nz](mailto:teawamutu@ckl.co.nz) | [www.ckl.co.nz](http://www.ckl.co.nz)

## New Zealand Institute of Surveyors Stakeholder Representative - ASaTS

- Support the design and roll out of a new project
- Wellington CBD location
- Exciting opportunity

Land Information New Zealand maintains the integrity of, and enhances the delivery of, the New Zealand survey and title system. This system is one of New Zealand government's larger systems and is considered to be national infrastructure and has over 13,000 professional users across the country. This system means New Zealanders know exactly what property they own. We do this by having an efficient survey and title processing operation, so buying and selling property is easy for New Zealanders.

We are undertaking a major replacement and enhancement programme and the New Zealand Institute of Surveyors (NZIS) Stakeholder Representative will be a liaison between the Advanced Survey and Titles Service (ASaTS) project team and NZIS. You will be contributing to the design and development of new and enhanced Landonline functionality; contributing to customer communications, training programmes and education; ensuring that NZIS is briefed on appropriate matters and that the programme team is informed of NZIS and practitioner views.

### In order to be successful in this role you will need:

- The ability to build strong working relationships with the all stakeholders involved in the project
- To be a Licensed Cadastral Surveyor
- Practical surveying experience including urban and rural cadastral surveys and geodetic surveys
- Thorough knowledge of the cadastral survey record and spatial systems and process
- Strategic agility and the ability to anticipate future consequences and trends accurately

*At Land Information New Zealand (LINZ), we underpin New Zealand's success with information about 'where' – that is, location information. From the best way to develop farm land, build a new suburb, manage a high country farm or navigate on land or at sea, our work and location information help people make better decisions and create economic, social, environmental and cultural value for New Zealand.*

Apply online and submit your CV and cover letter outlining your skills and experience for this role. We are looking for evidence of how you meet each of the key selection criteria.

Applications close **5pm Friday 16th September 2016**

For further information on this role please contact **James Mowat** on **04 498 3523** or [jmowat@linz.govt.nz](mailto:jmowat@linz.govt.nz)

## NZIS Publication Advertising Rates - 2016

### Surveying+Spatial

Surveying+Spatial - Quarterly magazine distributed to all NZIS members and subscribers.		Exc gst
A4 - back cover	210 x 297 mm + 5mm bleed top, bottom and left hand side	\$1200
A4 - inside Front cover	210 x 297 mm + 5mm bleed top, bottom and left hand side	\$1000
A4 Inside Back Cover	210 x 297 mm + 5mm bleed top, bottom and right hand side	\$1000
A4 - main body	180 x 270 mm no bleed, or 210 x 297 mm + 5mm bleed all four sides	\$800
A5 - main body	165 x 120 mm (horizontal) or 80 x 250 mm (vertical)	\$500
A6 - main body	165 x 57 mm (horizontal) or 80 x 120 mm (vertical)	\$300
Minis	80 x 48 mm (horizontal only)	\$150
Inserts (one A4 sheet - double sided)		\$1000
Inset (up to 8 A4 sheets - double side)		\$1500
Multi A4 publication limits apply)		\$2000

### Newslink

Newslink - Monthly online newsletter				
Rate card (Member/key partner) <i>Note: 1 column is 7.5 cm in width; 2 column 15.5cm in width.</i>				
Full page height	27cm x 7.5cm (1 column@\$12 /col)	\$324	27cm x 15.5 (2 columns)	\$648
Half page height	13cm x 7.5 (\$15 /col)	\$195	13cm x 15.5	\$390
Quarter page height	6cm x 7.5 (\$17 /col)	\$102	6cm x 15.5	\$204
Banner	4cm x 15 (\$19 /col)	\$76		
Newslink Rate card (non-member)				
Full page height	27cm x 7.5 (\$20 /col)	\$540	27cm x 15.5	\$1080
Half page height	13cm x 7.5 (\$22 /col)	\$286	13cm x 15.5	\$572
Quarter page height	6cm x 7.5 (\$25 /col)	\$150	6cm x 15.5	\$300
Banner	4 cm x 15 (\$27/col)	\$108		

### Website Situations Vacant/Wanted Classified Ads

NZIS Website Situation Vacant/Wanted		
NZIS Member/key partner	3 months exposure	\$60
Non-member	3 months exposure	\$140
e-Newslink and Website		\$150

#### Notes:

- Copy deadline for Newslink is the 20<sup>th</sup> of each preceding month.
- Copy deadlines for Surveying+Spatial deadlines are generally: 1 February, 1 May, 1 August, 1 November.
- Payments: Overseas payments are required to be paid in \$NZ with all international bank transfer charges included.
- All prices exclude GST.

#### Artwork requirements: Please supply one of the following (presented in order of preference):

1. A press-ready (ie hi-res) pdf using CMYK colours (or greyscale if b+w only), with all fonts embedded
2. A CMYK (or greyscale if b+w only) tiff file of 300dpi resolution or greater
3. A CMYK (or greyscale if b+w only) maximum quality jpeg file.

Email artwork files to: [janlawrence@surveyors.org.nz](mailto:janlawrence@surveyors.org.nz), Post: NZIS, PO Box 5304, Wellington 6145, New Zealand.

Courier: Level 3, Gleneagles House, 69-71 The Terrace, Wellington.