

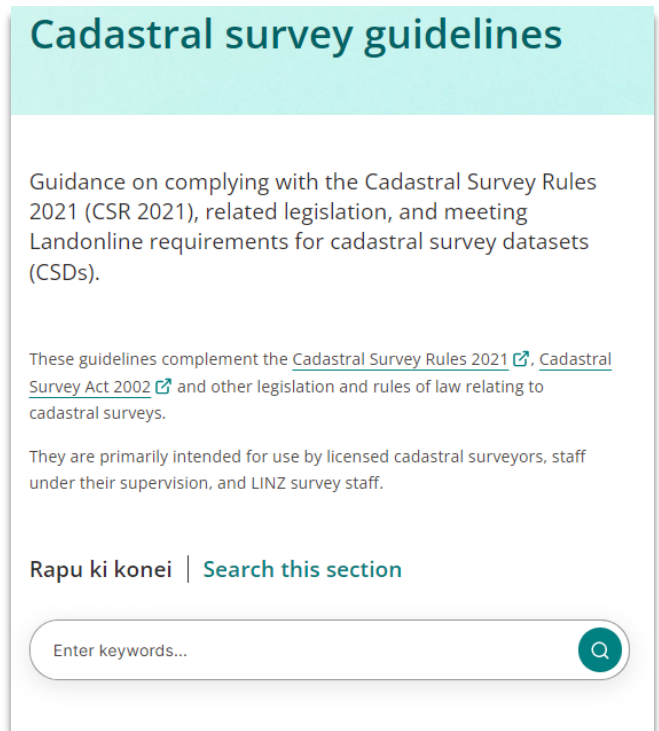
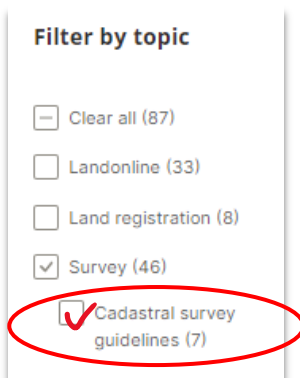
LINZ WEBSITE UPDATES

NEW SEARCH FUNCTION IN CADASTRAL SURVEY GUIDELINES

LINZ has added new search functionality to the [cadastral survey guidelines](#) landing page. On the main page of the guidelines there is a search function that automatically searches within the cadastral survey guideline articles and not across the rest of the website. (see image to right)

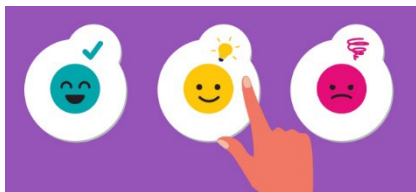
Prior to this functionality, any searches would include other survey pages or titles pages that you may not have been intending to search.

You can still do a search of the whole website and choose to filter your options once you have some results. For example, under the 'Filter by topic' heading on the left, you could select 'Survey' and a subcategory of Cadastral survey guidelines will appear. Tick that box to limit the search results to the Cadastral Survey Guideline pages (the same as searching from the guidelines landing page). You can also filter on 'Landonline' for e-survey guidance.



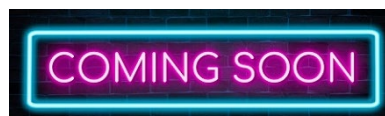
FEEDBACK ON LINZ WEBSITE

LINZ upgraded their website last year to make it easier for people to find information on New Zealand's whenua (land), moana (sea) and arawai (waterways). They are keen to improve, so would appreciate some feedback on how you're finding it. Please take some time to fill out their quick survey and let them know what's working for you and what isn't?



[Toitū Te Whenua website 5-minute user satisfaction survey](#)

Responses are confidential and are intended to inform future upgrades and changes.



APPROVED CADASTRAL SURVEY DATASETS INDEX

As a result of several requests, a spreadsheet is in the process of being created and will be published to the LINZ website soon. The datasets will be selected from a range of different situations and dataset categories to provide examples of CSDs that have met the requirements for survey approval.

NEW CROSS LEASE CSD GUIDANCE

As mentioned in the LINZ February Landwrap article, LINZ has published new cadastral survey guidelines for [cross lease CSDs](#). The new guidance aims to assist surveyors when dealing with cross lease developments. Sample datasets are included to illustrate various topics.

Topics covered are:

- What is a cross lease?
- Key terms
- Base land requirements
- Standard cross lease
- Staged cross lease
- Cross lease update
- Cross lease conversion
- Adding or removing land
- New easements and covenants
- Cross lease plans in areas of ground movement
- CSD requirements for cross lease plans
- Capture requirements for cross lease plans



NEW SCHEDULE AND MEMORANDUM OF EASEMENT GUIDANCE

LINZ has also very recently published new guidance on information included in a [Schedule/Memorandum](#) supporting document. Non-compliance of schedule/memorandum features continually on the top 10 list of requisitions and is also the most frequent cause of post approval amendments, therefore we recommend all surveyors check out the guidance.

Topics covered include:

- Purpose of Schedule/Memorandum supporting document
- Memorandum of easements
- Schedule of easements
- Easements in gross
- Accounting for existing easements
- Appurtenant easements
- Easement purpose
- Parcel identifiers
- Burdened land (Servient Tenement)
- Benefited Land (Dominant Tenement)
- Creating Document Reference
- Covenants
- Amalgamation conditions
- Landonline Automated Schedule/Memorandum
- Height -Limited Areas
- Approved CSD amendment

